

Map My County Help

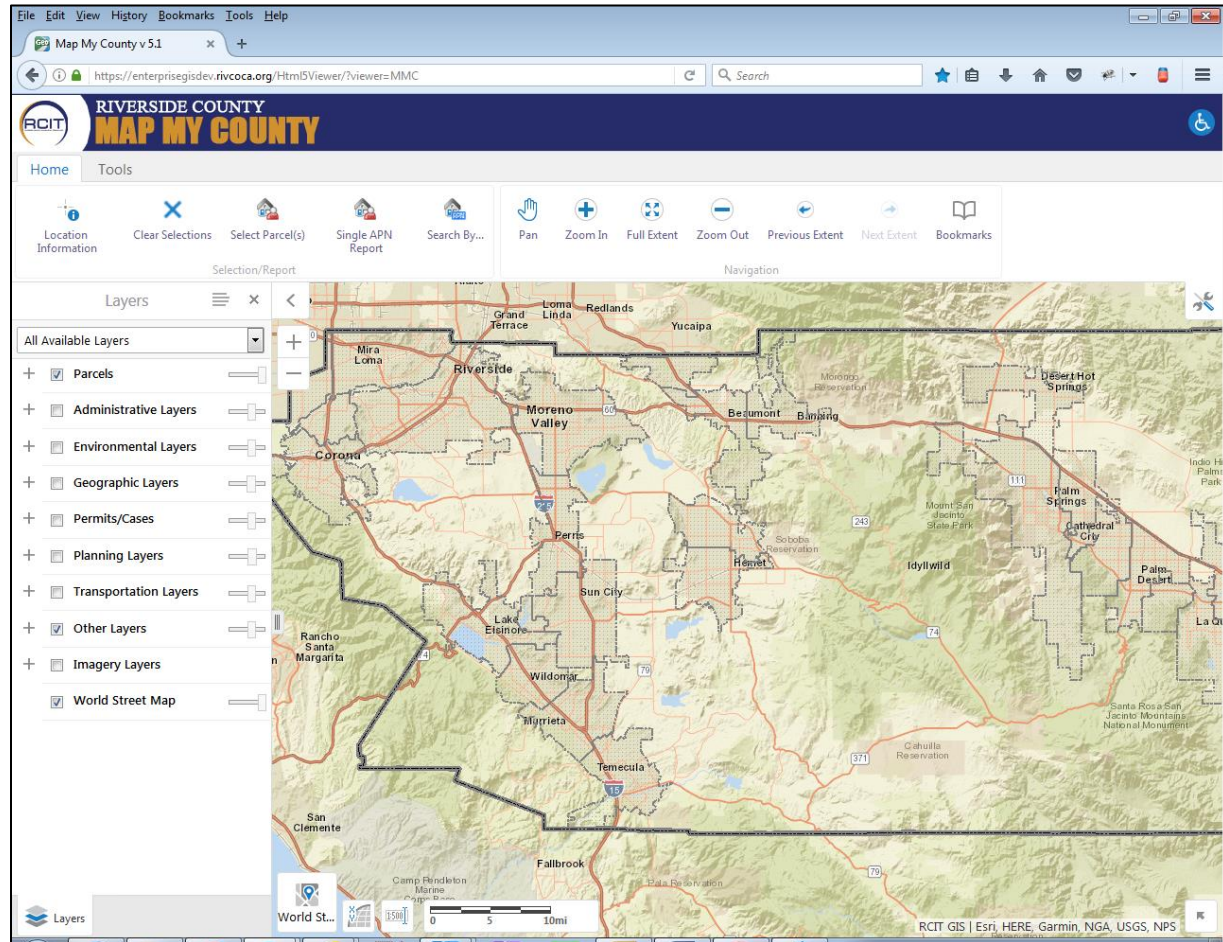
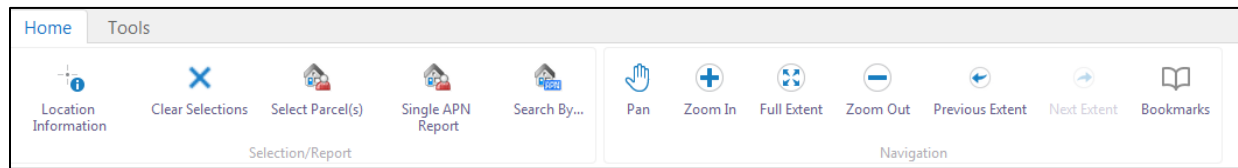

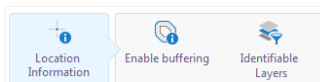


Figure 1. Opening Screen



 **Location Information.** Click on the map to get information about a point on the map. Layer information returned depends on what layers are visible at the time.



The Enable buffering button allows you to set a buffer distance around the point clicked on the map.

The Identifiable layer button allows you to toggle which layers you can get information about.

Map My County Help

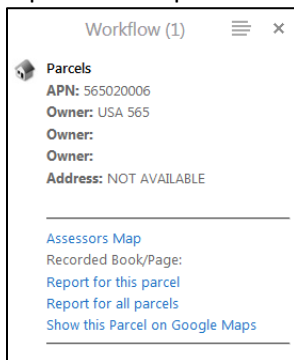


Clear Selections. This button clears any selected or highlighted features.

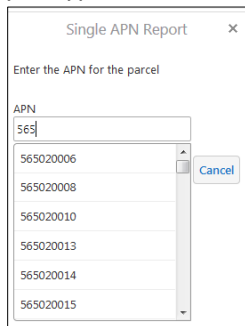


Select Parcel(s). This button lets you click on a single parcel to show information about it. The tool remains active so you can select many parcels. When a parcel is selected, the display will change and display information similar to the screen shot.

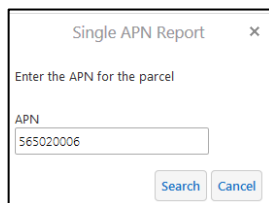
The upper section lists the APN, owners, and address. The lower section displays links to external websites to show the Assessor's Parcel Map, Tract Maps, Google Maps link and the ability to run a report on this parcel or multiple select parcels.



Single APN Report. This button will display a window in which you can enter one parcel number. As you type, intellisense is active and will provide a list similar APNs from which you can choose only one.

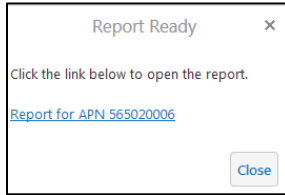


Once the parcel number is selected, click the search button.

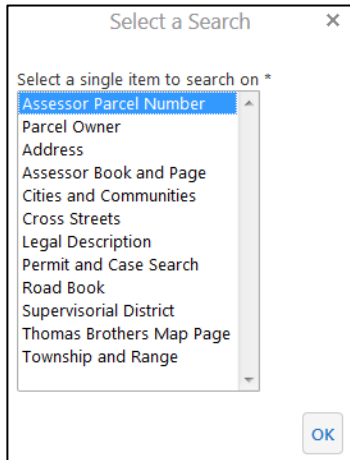


The program will immediately run the report for the parcel. Once the report is ready to view, the window will change and display a hyperlink so you can view the report.

Map My County Help



Search By... This button when clicked, will display a list of items that you can use to search with.



Assessor Parcel Number – Provides a text area where you can enter a list of parcel numbers and report on them.

Parcel Owner (County use only) – Provides an area where you can enter an owner's name and a get a list of potential matches.

Address – Provides an area where you can enter a house street address.

Assessor Book and Page – Provides an area where you can select from a list of Assessor Books and optional pages.

Cities and Communities – Provides a list of cities and communities to choose from.

Cross Streets – Provides an area where you can enter a street name and a list of potential cross streets will be displayed from which you can choose from.

Legal Description – Provides an area where you can enter information related to a legal description.

Permit and Case – Provides an area where you can enter a LMS Case number.

Road Book – Provides a pulldown of the Road Books that are available.

Supervisorial District – Provides a pulldown of the Supervisorial Districts.

Thomas Brothers Map Page – Provides pulldowns to search for a Thomas Bros. Maps Book and Page/Grid.

Township and Range - Provides pulldowns to search for a Township and Range.



Pan button. Moves the map around.



Zoom In button. Click on the map, then drag area of interest on the map. Map will zoom to that location.



Zoom to Full Extent. Zooms the map to the full extent.



Zoom Out. Drag a rectangle on the map to zoom out while keeping that area centered.

Map My County Help



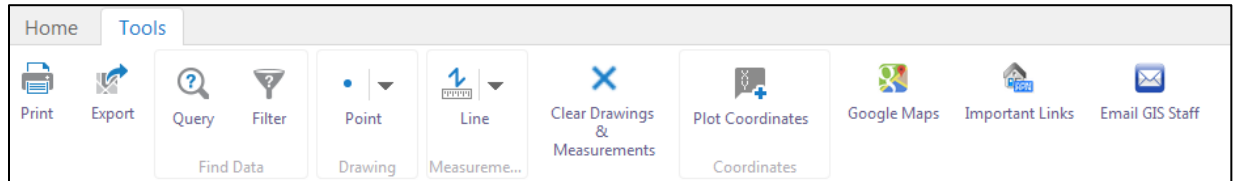
Previous Extent. Changes the map extent to the prior extent in the series.



Next Extent. Changes the map extent to the next extent in the series.



Bookmarks. Saves the current map extent with a name in the current session.



Print. Prints the current map extent. The final printout will have a title, legend, and notes.



Export. Exports the map to an image format.



Query. Allows the user to create custom queries.



Filter. Allows the user to create custom filter.



Drawing. Draws a variety of shapes on the map.



Measurements. Measures the distance on the map using a variety of shapes.



Clear Drawings and Measurements. Clears graphics from the map.



Plot Coordinates. Allows the user to find a location on the map using a variety of coordinate systems.



Google Maps. Displays the current map extent in Google Maps.



Important Links. Displays a list of links that are used in the Parcel report.



Email GIS Staff. Sends an email to the GIS Staff.